



Long Street, Thirsk, YO7 1AU
Price Guide £379,950



Luke Miller & Associates
ESTATE AGENTS LETTINGS AGENTS FINANCE

A superior double-fronted Victorian town house, brought to the market by Luke Miller & Associates, offering substantial and versatile living accommodation arranged over three floors. Beautifully combining period character with practical family living, the property also benefits from a detached home office, well-maintained gardens, and a highly convenient position close to the town centre and local amenities.

- Attractive double-fronted Victorian town house
- Beautiful landscaped gardens and hidden allotment
- Four bedrooms and two spacious reception rooms
- Workshop, utility room and generous storage
- Detached office/garden room with shower room
- Conveniently located close to the town centre



The property

On entering the property, a welcoming reception hall provides access to the principal ground floor accommodation. To the front of the home are two generous reception rooms, each offering flexible living space for everyday family life or formal entertaining. At the heart of the property is the well-appointed kitchen, fitted with an excellent range of base and wall units, generous work surface space, and a selection of integrated appliances. A useful utility room and cloakroom complete the ground floor.

The first floor offers four well-proportioned bedrooms, providing ample space for growing families, guest accommodation, or those requiring a home office or hobby room. The family bathroom is fitted with a modern white suite comprising a panelled bath with shower over, low-level WC, pedestal wash hand basin, and tiled surrounds.

Outside, the property continues to impress with a substantial detached outbuilding, offering excellent potential as a home office, studio, gym, or recreational room. Complementing this versatile space is a contemporary shower room fitted with a walk-in shower, wash hand basin and WC, making it ideal for those working from home, entertaining, or creating independent guest accommodation. A further workshop completes the outside accommodation, providing excellent additional storage and workspace.

The gardens are an outstanding feature of the property, having been thoughtfully designed to create a series of private outdoor spaces. A paved courtyard immediately adjoins the outbuilding, providing an ideal setting for outdoor dining and entertaining, before leading through to beautifully established cottage-style gardens with an abundance of mature shrubs, climbing roses, flowering plants and herbaceous borders. Beyond this, a secluded seating area offers a peaceful place to relax, while a gravelled service area provides practical access to the workshop and useful storage. Tucked away at the far end of the garden is a hidden allotment complete with raised beds and a greenhouse, offering a fantastic opportunity for those wishing to grow their own fruit, vegetables and seasonal produce. Lovingly cultivated over many years, the gardens extend far beyond first impressions and provide a wonderful backdrop to this exceptional family home.

Important Information

The property is Freehold
Council: North Yorkshire
Tax Band: D
EPC: TBC
EPC Link: TBC

Disclaimer

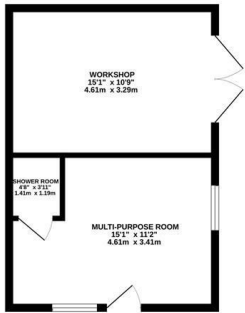
We strive to ensure that our sales particulars are accurate and reliable. However, they do not constitute an offer or form part of any contract, and should not be relied upon as statements of representation or fact. Services, systems, and appliances mentioned in this specification have not been tested by us, and no guarantee is given regarding their operational ability or efficiency. All measurements are provided as a general guide for prospective buyers and are not exact. Please note that some particulars may still require vendor approval, and images may have been enhanced. For clarification or further information on any details, please contact us—especially if you are traveling a significant distance to view the property. Fixtures and fittings not explicitly mentioned are subject to agreement with the seller.

The copyright and all other intellectual property rights on this site, including marketing materials, trademarks, service marks, trade names, text, graphics, code, files, and links, are owned by Luke Miller & Associates. All rights are reserved.

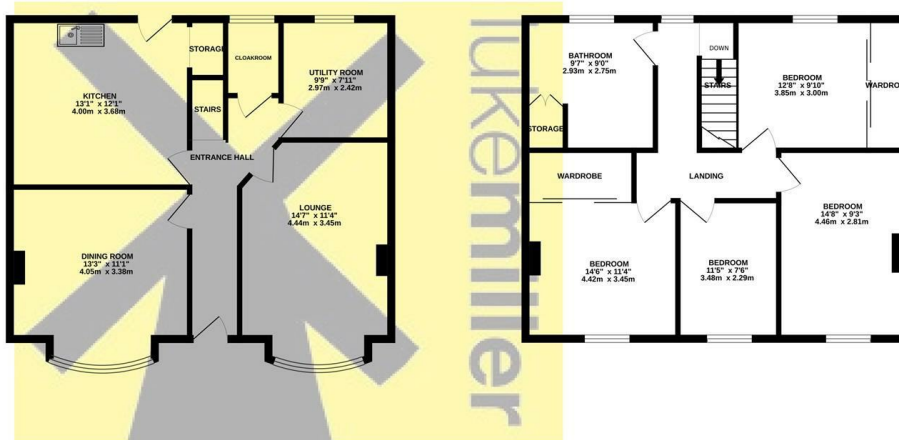




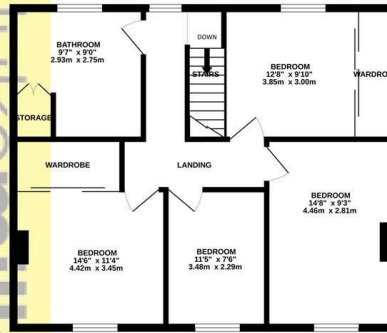
OUTBUILDING
332 sq.ft. (30.9 sq.m.) approx.



GROUND FLOOR
663 sq.ft. (63.4 sq.m.) approx.



1ST FLOOR
653 sq.ft. (60.7 sq.m.) approx.



TOTAL FLOOR AREA : 1668 sq.ft. (155.0 sq.m.) approx.

Whilst every attempt has been made to ensure the accuracy of the floorplan contained here, measurements of doors, windows, rooms and any other items are approximate and no responsibility is taken for any error, omission or mis-statement. This plan is for illustrative purposes only and should be used as such by any prospective purchaser. The services, systems and appliances shown have not been tested and no guarantee as to their operability or efficiency can be given.
Made with Metropix ©2026



Tel: 01845 525112 Email: sales@lukemiller.co.uk www.lukemiller.co.uk 4 Finkle Street, Thirsk, North Yorkshire YO7 1DA